

# Thermal & Moisture Protection

Dampproofing & waterproofing • Air barriers • Wood siding • Membrane roofing • Intumescent mastic fireproofing • Sealants, caulking & seals

## Green Roof Inn

Sika Sarnafil has green-roof systems for use on both concrete and metal deck applications. Its G476 Self-Adhered membrane is specially designed for sub-grade environments. It is compounded to remain watertight in extreme conditions, including ponding water and exposure to plant roots, fungi, and bacterial organisms. No flammable adhesives or hot asphalt kettles are required, making installation safe and easy. Pictured here is an extensive green roof planted with more than 6,000 sedum plants. Sika Sarnafil, Canton, Mass. [www.sarnafilus.com](http://www.sarnafilus.com)

CIRCLE 239

## The shear strength of it

Manufactured in Austria and recently made available in the U.S., BBS multilayered, solid wood cladding panels double as a structural wall. By laminating longitudinal and cross layers, the wood achieves greater strength and stability. The panels are made up of 99.4 percent solid wood, either Austrian Red Spruce or Larch, and .6 percent formaldehyde-free glue, whose vapor-inhibiting properties allow the panels to be installed without vapor or wind barriers. Walls can be composed of vertically as well as horizontally placed panels. Available in multiple thicknesses and profiles. Roof and floor panels are also available. HolzBuild, Ossining, N.Y. [www.holzbuild.com](http://www.holzbuild.com) CIRCLE 240

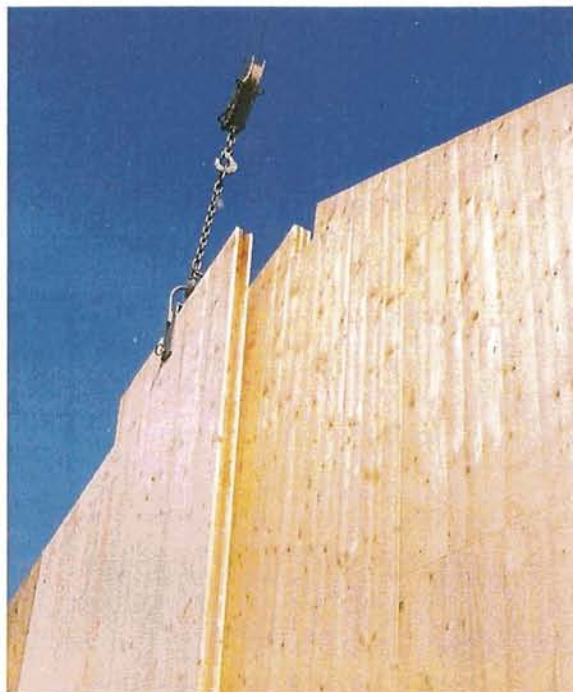
## Sticky rolls

Eternabond's DoubleStick is a self-sealing adhesive that creates a tight, permanent, waterproof seal between two or more similar or dissimilar surfaces. Made from synthetic resins, thermoplastics, non-curing butyl rubbers, and a built-in primer, the product is sandwiched between two layers of removable protection film. It is ideal for use as a gasket when installing windows or vents, or as a lap seal under the foot of an equipment curb or skylight, and remains fused and flexible in extreme temperatures. DoubleStick comes in standard 50' rolls in 2", 4", or 6" widths. Eternabond, Mundelein, Ill. [www.eternabond.com](http://www.eternabond.com) CIRCLE 241

It's great to see how HolzBuild's Solid Wood Panels provide a monolithic, renewable material that can provide both structure and envelope with simple detailing. —ERIC BUNGE, AIA



239



240



241